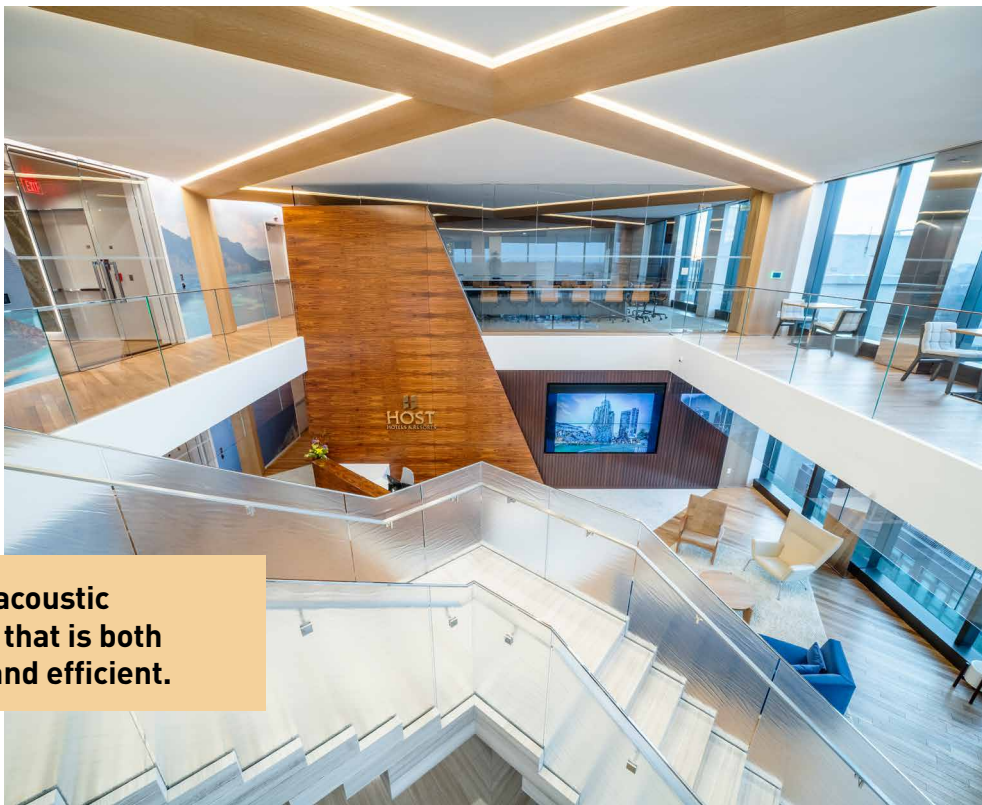


A Case Study: Host Hotels & Resorts Bethesda, Maryland, USA.



When Host was moving their headquarters to Bethesda, Maryland, the designers wanted to create a design concept that boasted a textural field that gets exponentially smaller as you move away from the focal point. In addition to this design goal, they needed to provide a sustainable and effective acoustic environment for both their twostory lobby area as well as the formal and informal meeting areas that surround.



Ensuring an acoustic environment that is both sustainable and efficient.

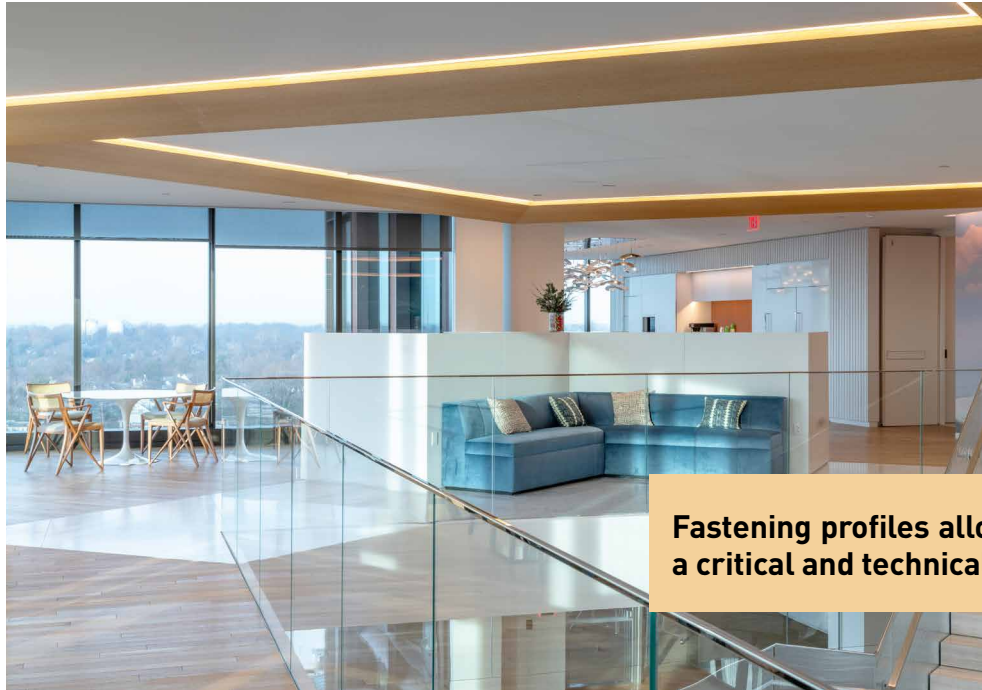
Lobby of the Host Hotels & Resorts corporate headquarters in Bethesda, Maryland.

Optimize the acoustics on a volume of 2 floors

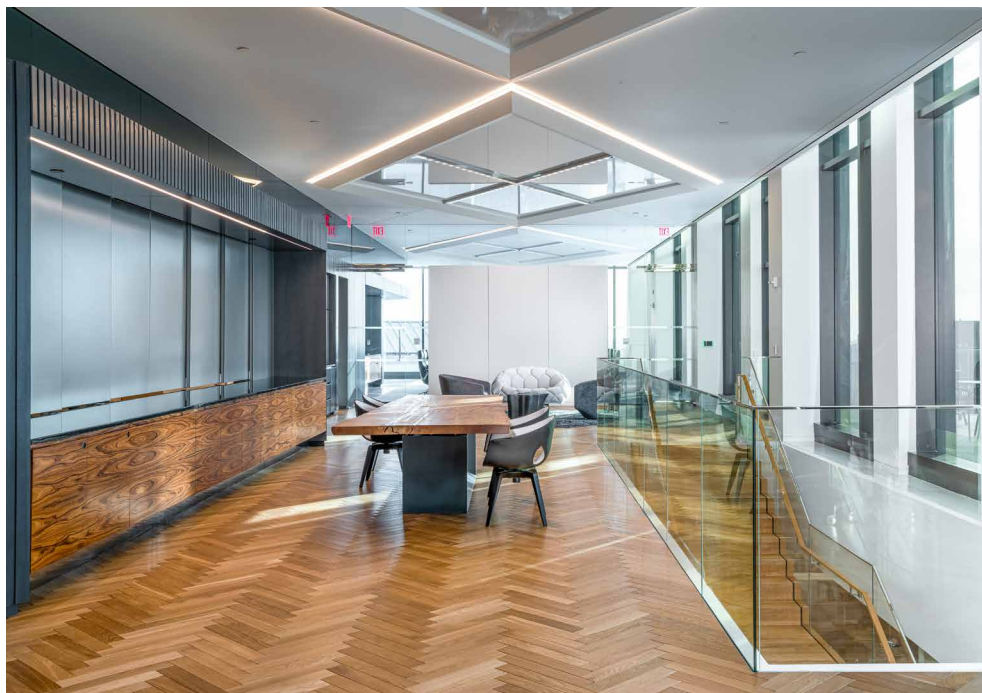
The architects at Gensler DC worked closely with the CLIPSO team to develop and enhance the design function of this space based on their budget guidelines, achieving effective acoustic performance, and most importantly maintaining their design goal. Due to the two-story nature of the space, CLIPSO recommended using the a 2" system to include Acoustic 495 D coverings and LA 54 acoustical batting, together offering an NRC value up to 1.05.

CLIPSO responds to the specific problems of each site!

Most of the ceiling throughout the space was directly attached using perimeter tracks. However, there was a specific area behind the diamond ceiling feature that would require access to mechanical equipment. For this area, CLIPSO used a 42 mm thick aluminum profiles to create a self-supported acoustic frame system, utilizing the CLIPSO Torsion Spring mounting system which would allow the flexibility to maintain the design intent, maintain the acoustic performance, and also provide accessibility to a critical and technical area.

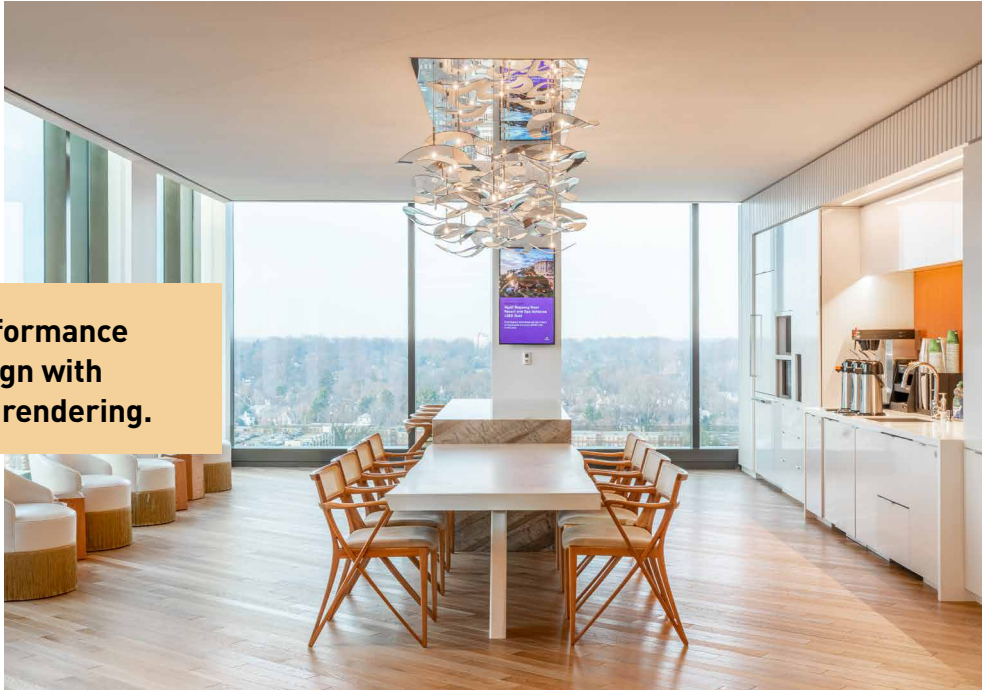


First floor lobby of Host Hotels & Resorts in Bethesda, Maryland.



Common Areas - Host Hotels & Resorts in Bethesda, Maryland.

A unique performance oriented design with breathtaking rendering.



Dining Room - Host Hotels & Resorts in Bethesda, Maryland.

The architect and the client were thrilled when they saw the result. CLIPSO effectively worked hand-in-hand with the experts at Gensler DC, and the installation gurus at The Huff Company, Inc., to create a singlesource, performance-driven design with breathtaking results!



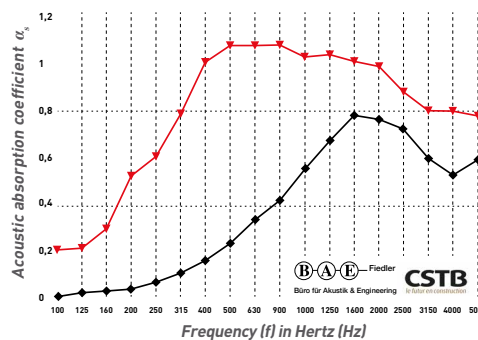
Meeting Room - Host Hotels & Resorts in Bethesda, Maryland.

Project: **Host Hotels & Resorts Headquarters, Bethesda, MD**
Architect: **Gensler DC**
Installer: **The Huff Company, Inc.**

Technical characteristics of the 495 D and 495 AC covering

Polyester knitted fabric coated with polyurethane (PU)

Openwork mesh, 250 000 holes/m²
 Width up to 5.10 m
 Thickness: 0.4 mm
 Weight: 235 gr/m² (+/- 10 %)
 Colours: 3 (495 D) and 29 (495 AC)
 Appearance: mat, smooth and uniform
 Fire reaction: Euroclass
 Tear strength: CH 5.5 daN/TR 7.5 daN
 Light fastness > 8



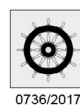
- ▶ 495 D / AC covering with insulation
 $\alpha_s = 1$ - Classification: A

Original wall or ceiling
Insulation LA54 (50 mm)
Empty plenum space (55 mm)
495 D / AC covering (0,4 mm)
- ◆ 495 D / AC covering without insulation
 $\alpha_s = 0,30$ - Classification: D

Original wall or ceiling
Empty plenum space (55 mm)
495 D / AC covering (0,4 mm)

The 495 D covering offers the same acoustic performance whether printed or not.

Other acoustic tests are available on your Espace Pro, or by contacting our sales department:
service.commercial@clipso.com



CLIPSO[®]
 so different

Headquarters: 5 rue de l'Église • F-68800 VIEUX-THANN • Tel.: +33 (0)3 89 37 10 84 • E-mail: contact@clipso.com

www.clipso.com